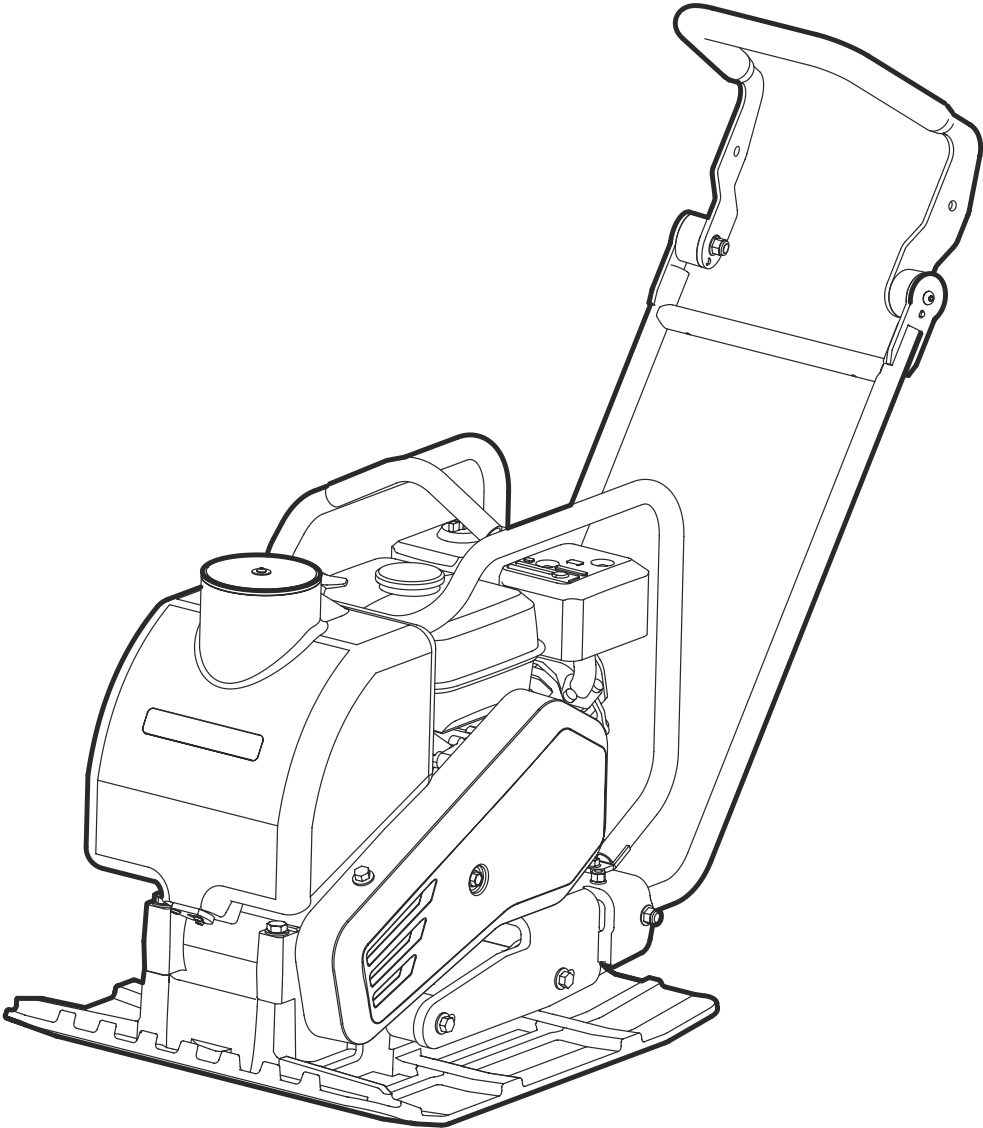


USER MANUAL IN ORIGINAL

DFP9X



USE

DYNAPAC DFP9X

is used to pack ballast under foundations, on garage approaches and on pavements, etc. The machine is also suitable as a complement to larger packing machines, for example rollers, when packing areas with poor access.

The machine equipped with water tank is designed to pack small asphalt areas and is particularly suitable for additional works and repair works. The compact design with an articulated control handle makes the machine very easy to manoeuvre.

The machine is also suitable for packing sand and gravel in thin layers.

CONTENTS

USE	2
STANDARDS	3
SIGNS	4
SAFETY INSTRUCTIONS	4
TECHNICAL DATA.....	5
FUNCTION	5
TECHNICAL DESCRIPTION	6
DAILY CHECKS	7
BEFORE STARTING THE ENGINE	8
STARTING	8
AFTER STARTING.....	8
STOPPING	8
WATER TANK.....	9; 10
MOUNT THE WHEELS.....	10
DIMENSIONS.....	11
TRANSPORTATION.....	12
NOTES.....	13; 14
DECLARATION OF CONFORMITY.....	15

STANDARDS

Noise

Measurement in accordance with the standard EN 500-4 Rev.

1:1998, Annex C:

Measurement uncertainty ± 0.5 dB (A) in 95% of the measurements.

In accordance with the conditions in Directive 2000/14/EC, Annex VI, the following values are reported:

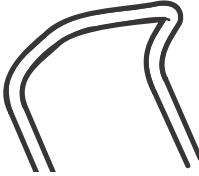
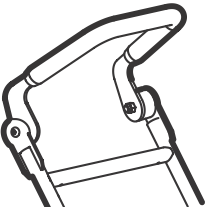
	DFP9X
Sound pressure level at the operator's ears, LpA	90 dB (A) LpA
Permitted sound power level, L _{WA}	108 dB (A)
Guaranteed sound power level, L _{WA}	105 dB (A)

As the sound pressure level at the operator's ears exceeds 80 dB (A), ear protectors must be used during operation!

Hand/arm vibrations

The vibration acceleration was measured in accordance with the ISO 5349 standard during operation on a graveled surface. The measurement values were translated into the maximum daily exposure time for regular usage. For additional information about vibrations, please confer the regulation AFS 2005:15 from the Swedish Work Environment Authority, effective July 1st 2005.

Measurement uncertainty ± 0.3 m/s² in 95% of the measurements.

DFP9X	Metric	Imperial
Hand/arm-vibrations, m/s ² Standard handle 	4.6 m/s ²	15 ft/s ²
Hand/arm-vibrations, m/s ² Comfort handle 	3.2 m/s ²	10.4 ft/s ²

Exhaust emissions

DFP9X meet the requirements for exhaust emissions in accordance with U.S. EPA EXH/EVP AND CALIFORNIA SORE EXH/EVP REGS FOR 2019

SIGNS

Warning signs



Before use, carefully read the manual and its safety instructions so that you can handle the machine safely. Ensure that the manual is always accessible.



Engine, silencer: to avoid burns or discomfort, do not touch hot engine parts when the engine is on or when the machine has recently been used.



Belt drive: Keep hands, tools and other objects away from the belt drive when the machine is on to avoid injury and damage. See the safety instructions in the manual.



As the sound pressure level at the operator's ears exceeds 80 dB (A), ear protectors must be used when working with the machine to prevent hearing damage.

SAFETY INSTRUCTIONS

WARNING: Breathing diesel engine exhaust exposes you to chemicals known to the State of California to cause cancer and birth defects or other reproductive harm.

- Always start and operate the engine in a well-ventilated area.
- If in an enclosed area, vent the exhaust to the outside.
- Do not modify or tamper with the exhaust system.
- Do not idle the engine except as necessary.

For more information go to www.P65warnings.ca.gov/diesel.

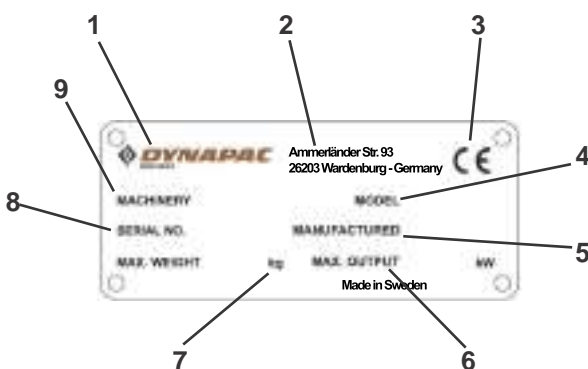
WARNING: Crude oil, gasoline, diesel fuel, and other petroleum products can expose you to chemicals including toluene and benzene, which are known to the State of California to cause cancer and birth defects or other reproductive harm.

These exposures can occur in and around oil fields, refineries, chemical plants, transport and storage operations, such as pipelines, marine terminals, tank trucks, and other facilities and equipment.

For more information go to: www.P65Warnings.ca.gov/petroleum.



Machine Signs



1. Manufacturer
2. Place, country of manufacture.
3. CE mark.
4. Model name.
5. Year of manufacture.
6. Max. engine power.
7. Max. weight.
8. Serial number.
9. Machine type

TECHNICAL DATA

DFP9X	Metric	Imperial
Net weight	93kg	205.0 lbs
Base plate, w x l	430 x 580 mm	16.9 x 22.8 in
Permitted inclination	18°	
Speed	25 m/min	82 fpm
Centrifugal force	14 000N	3147.3 lbs
Vibration frequency	88 Hz	5400 vpm
Drive engine	Honda GX 160	
Engine power	4.0 kW	5.44 hp
Engine RPM	3600 RPM	
Fuel tank volume	3.1 liter	0.81 gal
Fuel type	Unleaded petrol or alkylate	
Water tank volume	11 Liter	2.9 gal

Optional weight	Metric	Imperial
Transport wheels	2 kg	4.4 lbs
Water tank	2.5 kg	5.5 lbs

FUEL AND OIL RECOMMENDATIONS

FuelUnleaded petrol or alkylate
 Engine oilSAE10W-30
 Engine oil change: first oil change after 20 hours then every 100 hours of operation

FUNCTION

The machine consists of a base plate with a vibration element and an upper part cushioned from the base plate. The upper part include even carrying handle. The lifting hook includes a water tank bracket. The power is transmitted from the petrol engine to the vibration element via a V-belt. To adjust the V-belt loosen the four screws which holds the upper part to the base plate and pull whole the upper part backward to the operator.

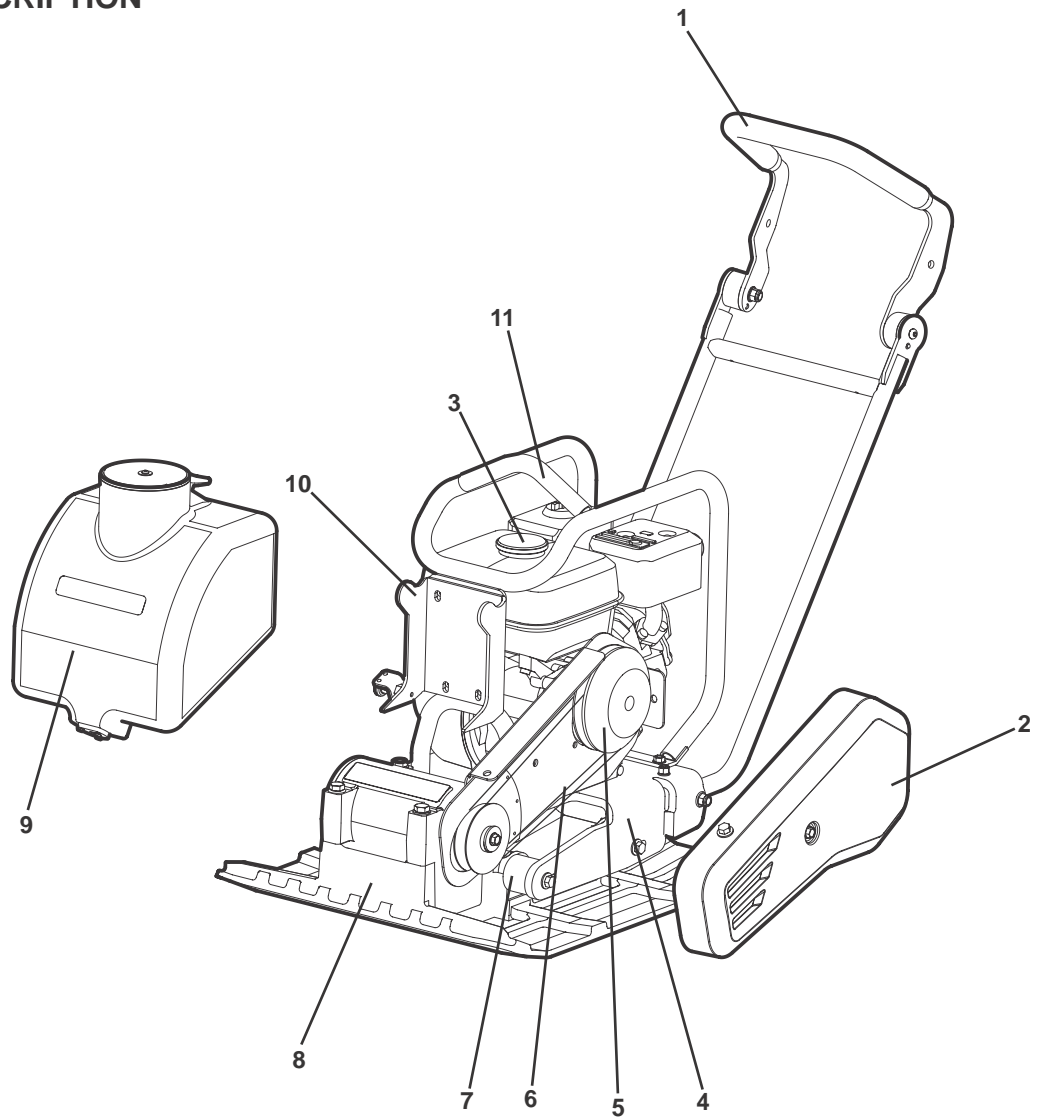
The engine is fitted with an integrated centrifugal clutch. Due to the direction of rotation and the position of the vibration element at the front end of the base plate, the vibrator moves forward under its own power.

The machine’s vibration element stops when the throttle is switched to idle.

Work with the machine in daylight or other adequate lighting. All other use is discouraged.

Transport wheels are accessories.

TECHNICAL DESCRIPTION



1. Handle
2. Protective cover
3. Petrol engine
4. Engine plate
5. Centrifugal clutch
6. V-belt
7. Rubber damper
8. Vibration element / Base plate
9. Water tank
10. Water tank bracket
11. Lifting eye

DAILY CHECKS

Fuel Check

Check that there is fuel in the tank. Top up if necessary.

Engine Oil Level Check

Check the oil level in the crankcase every day. The oil must reach the edge of the filling hole when the machine is on a level surface.



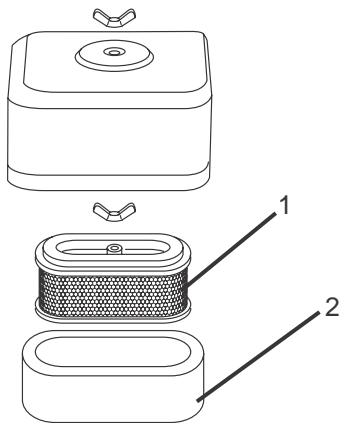
Air Filter Check

The air filter must be checked at least once every working week. When working in dusty conditions, check daily.

1. Paper element
2. Foam plastic element

Cleaning the air filter

1. Remove the foam plastic element and the paper element and check that they are undamaged. Replace damaged parts.
2. Wash the foam plastic element in liquid with a high flashpoint and let it dry properly. Dip in engine oil and squeeze dry.
3. Strike the paper element against a hard object a few times to loosen any dirt.



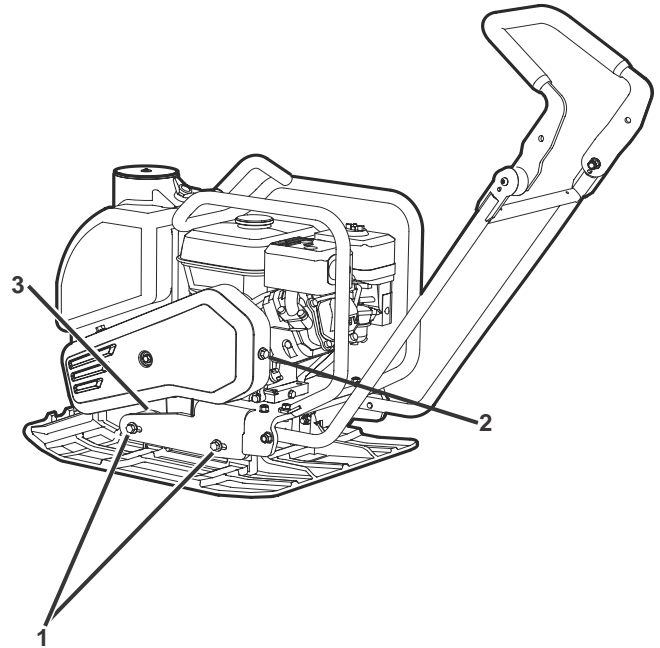
Oil/Fuel Leakage

Check every day that the engine is not leaking oil or fuel. If a leak is discovered, the machine may not be operated until the fault has been remedied.

See also the separate engine instructions!

V-belt Drive

Check the tension and condition of the V-belt regularly. Replace a damaged V-belt with the new type **XPA 907**



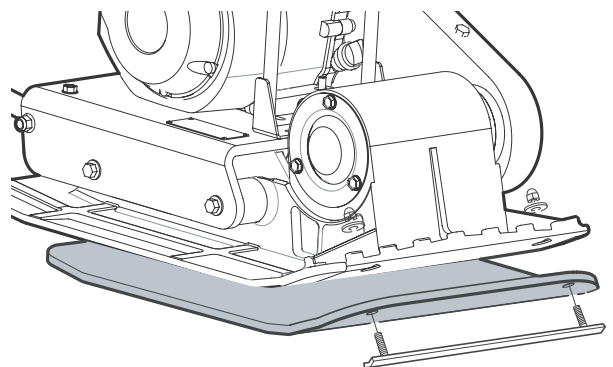
Adjustment of V-belt tension

Loosen the screws (pos 1) that hold the engine plate. Loosen the screws (pos 2) holding the cover. Remove the cover.

Tension the V-belt by pulling the handle on the side of the engine plate. Tighten the screws. Refit the cover.

Rubber Dampers

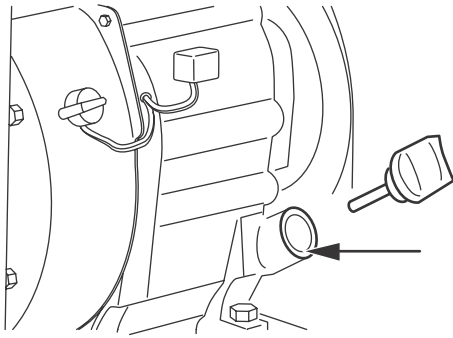
Check the condition of the rubber dampers (pos 3) regularly. Replace damaged dampers.



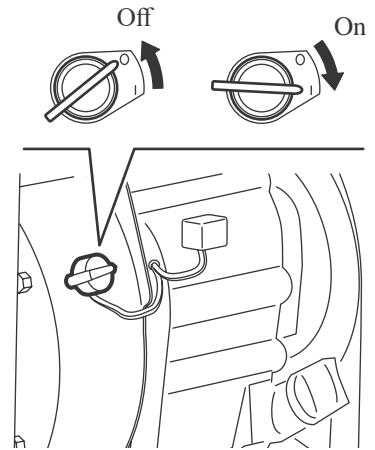
Polyuretán Pad

A polyuretán pad is used for stone paving work to protect against stones and ground clinker.

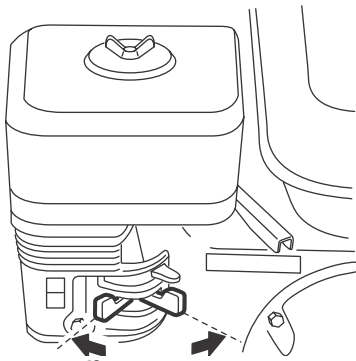
Note! accessories



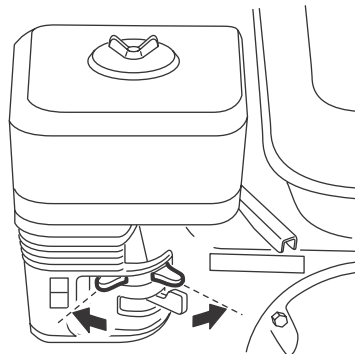
Oil level



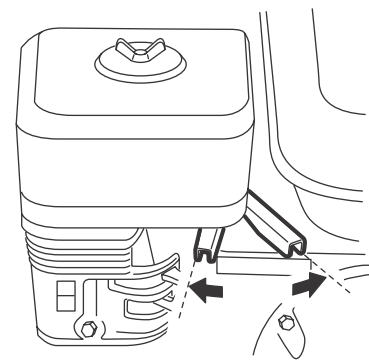
Engine power switch



Fuel valve



Choke



Throttle lever

BEFORE STARTING THE ENGINE

See Daily Checks on page 8.

STARTING

Switch the engine power switch to “on”. Open the fuel valve.

See that the lever is in idle speed position.

Activate the choke. If the engine is cold, activate the choke completely. Do not use the choke if the engine is warm or if the air temperature is high.

Start by pulling the starting handle. Pull it first until the mechanism engages. Then pull it hard and fast.

AFTER STARTING

Switch the throttle lever to idle.

Open the choke gradually.

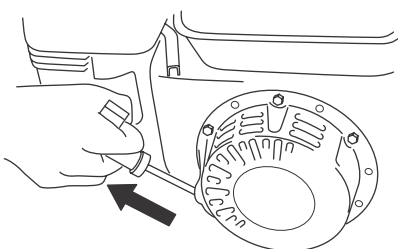
Run the engine warm for around 1-5 minutes.

STOPPING

Switch the engine to idle and let it run for a few minutes.

Switch the engine power switch to “off”.

Close the fuel valve.



MOUNT THE WATER TANK

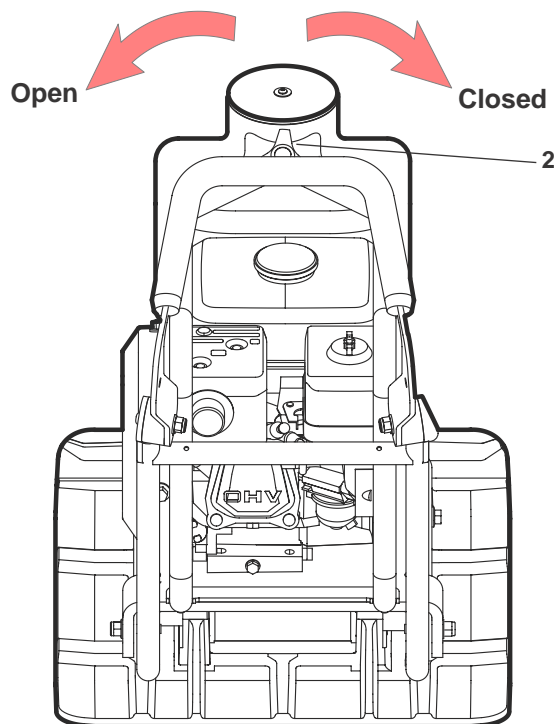
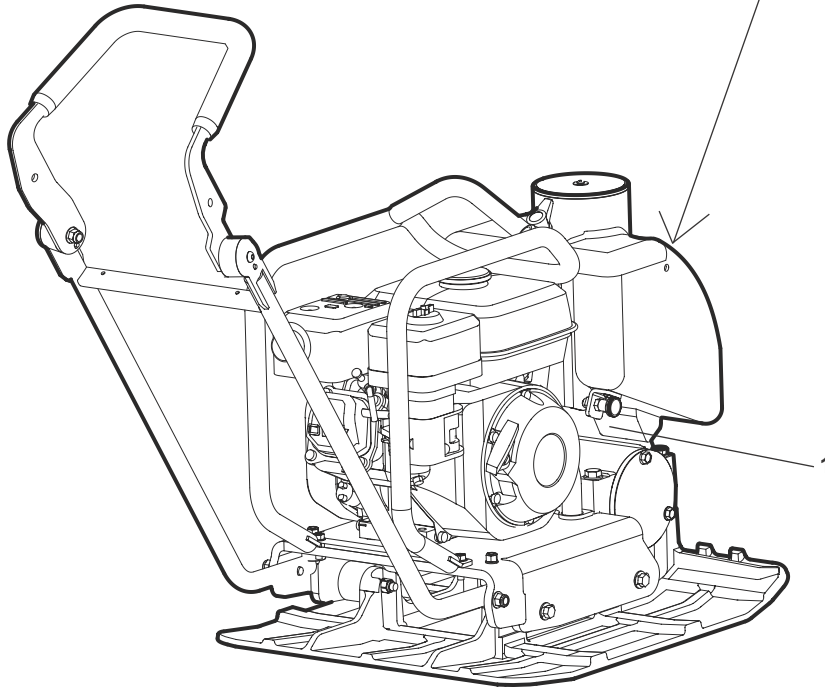
The water tank for the DFP9X is removable. To mount the water tank do this steps:
Push the water tank down with the side lock **pos. 1** open. The rear part of the water tank's should be placed in the holder on the bracket.

Make sure that the water tank hangs firmly in the holder, release the side lock and check that the pin of the side lock hits the hole on the bracket.

Start the water supply for asphalt work

Open the water trap **pos. 2** by turning it counterclockwise from the operator's hole.

Push the water tank from downwards.



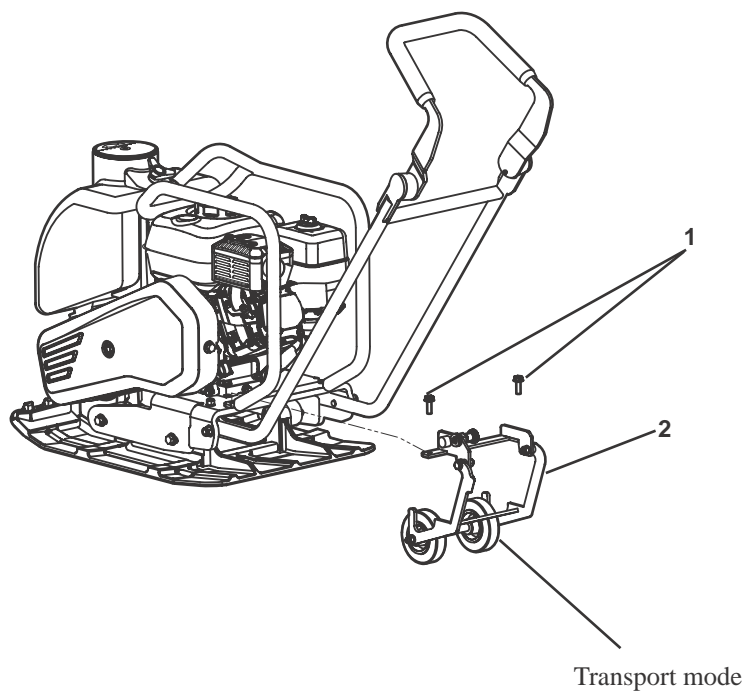
MOUNT THE TRANSPORT WHEELS

The transport wheel kit for the DFP9X is possible to mount afterwards.

To mount the transport wheel kit do this steps:

Loosen the two screws which hold the rear part of the protection frame. **pos. 1.**
Place the transport wheel kit **pos. 2** with the screws holes fitting the protection frame and the engine plate holes. Tighten the screws.

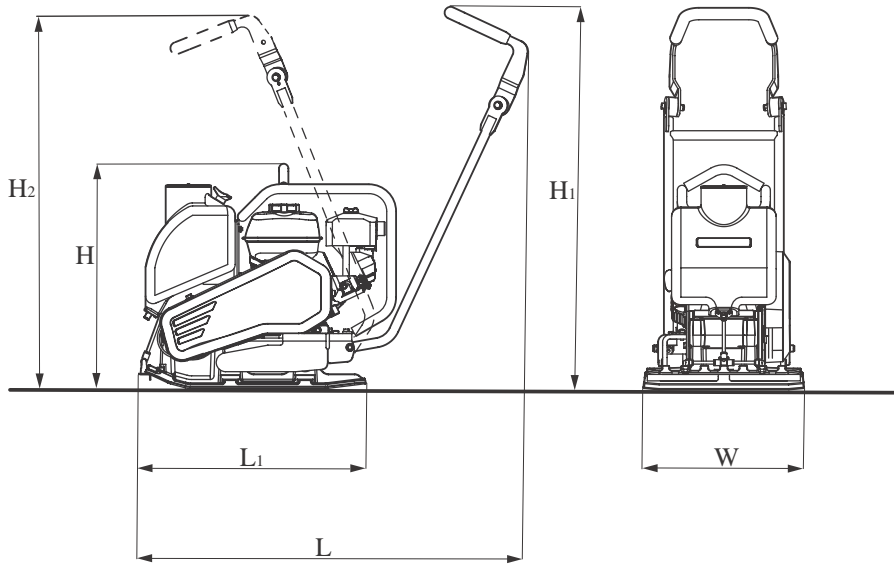
The transport wheels in the position like shown in the picture below is transport position.



Transporting position

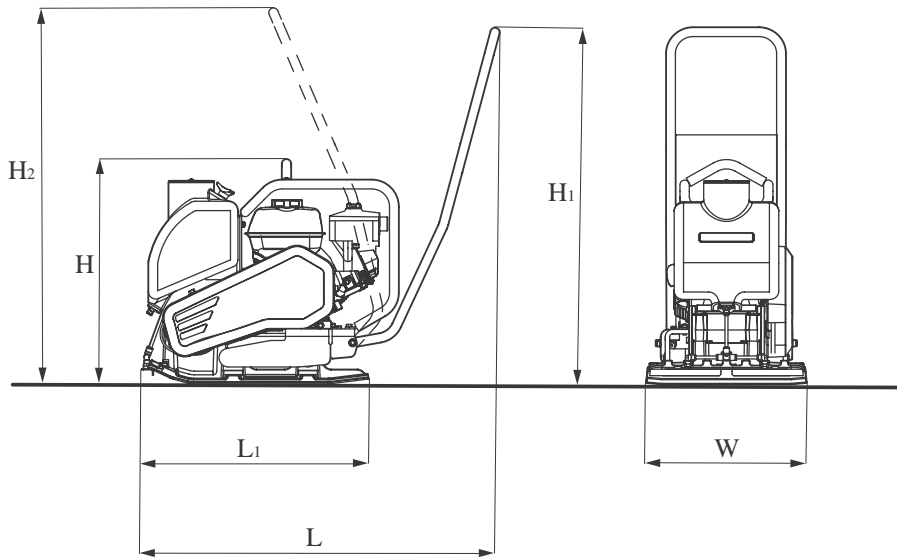
DIMENSIONS in mm

Dimensions Comfort handle



H	630
H ₁	990
H ₂	980
L	1070
L ₁	610
W	500

Dimensions Standard handle



H	630
H ₁	945
H ₂	980
L	970
L ₁	610
W	500

TRANSPORTATION

It is easy to remove the handle without tools, and the boot of a standard car is sufficient to transport the machine.

Lifting by hand

Remove the handle by pushing it forward and pull apart the shafts so that the fastening tabs release.

Move the handle slightly sideways so that the handle release.

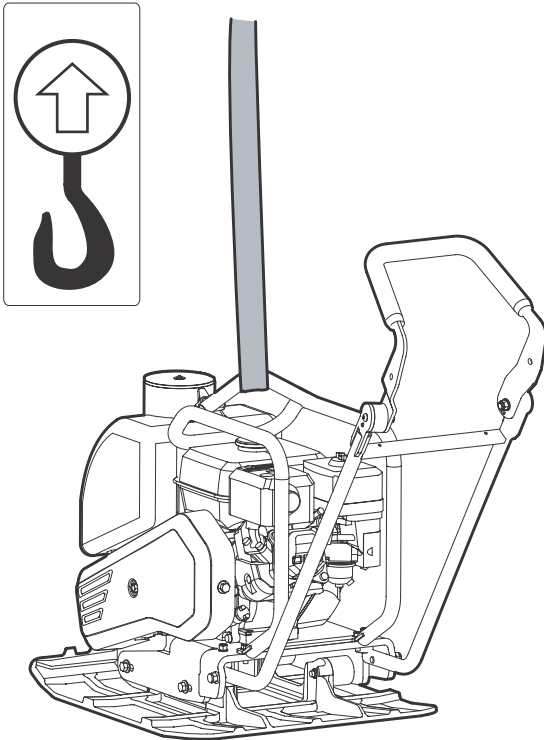
Caution! The machine must be lifted by 2 persons!

Lift by means of the handle on the back and the front edge of the machine.

Lifting with crane

Tilt the handle forward.

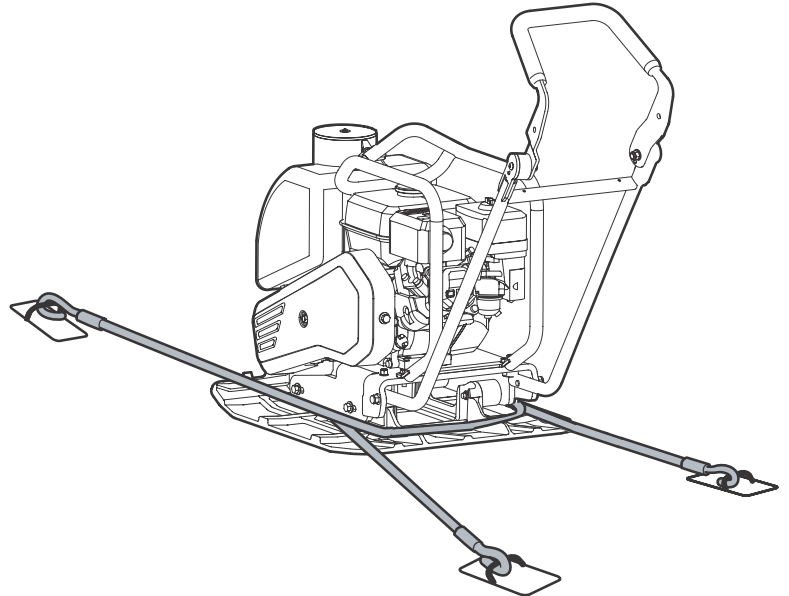
Fit a lifting sling to the lifting hook and thread the lifting sling between the shafts of the handle, see illustration below.



Transport locking

Secure the machine with straps according to illustration during transportation

Note! Secure it by the base plate and not the rubber-cushioned upper part.





Declaration of conformity

Manufacturer

**Dynapac GmbH
Ammerländer Str. 93
26203 Wardenburg - Germany**

1. Category: Vibratory plate

2. Type: DFP9X

3. Engine power: 4,0 kW

The product complies with the following directives:

2006 / 42 / EG

2000 / 14 / EG

2004 / 108 / EG

EN 500-1

EN 500-4

Technical documentation held by:

Dynapac GmbH, Ammerländer Str. 93 26203 Wardenburg - Germany
Thorsten Bode / VP Business Unit Light Equipment

